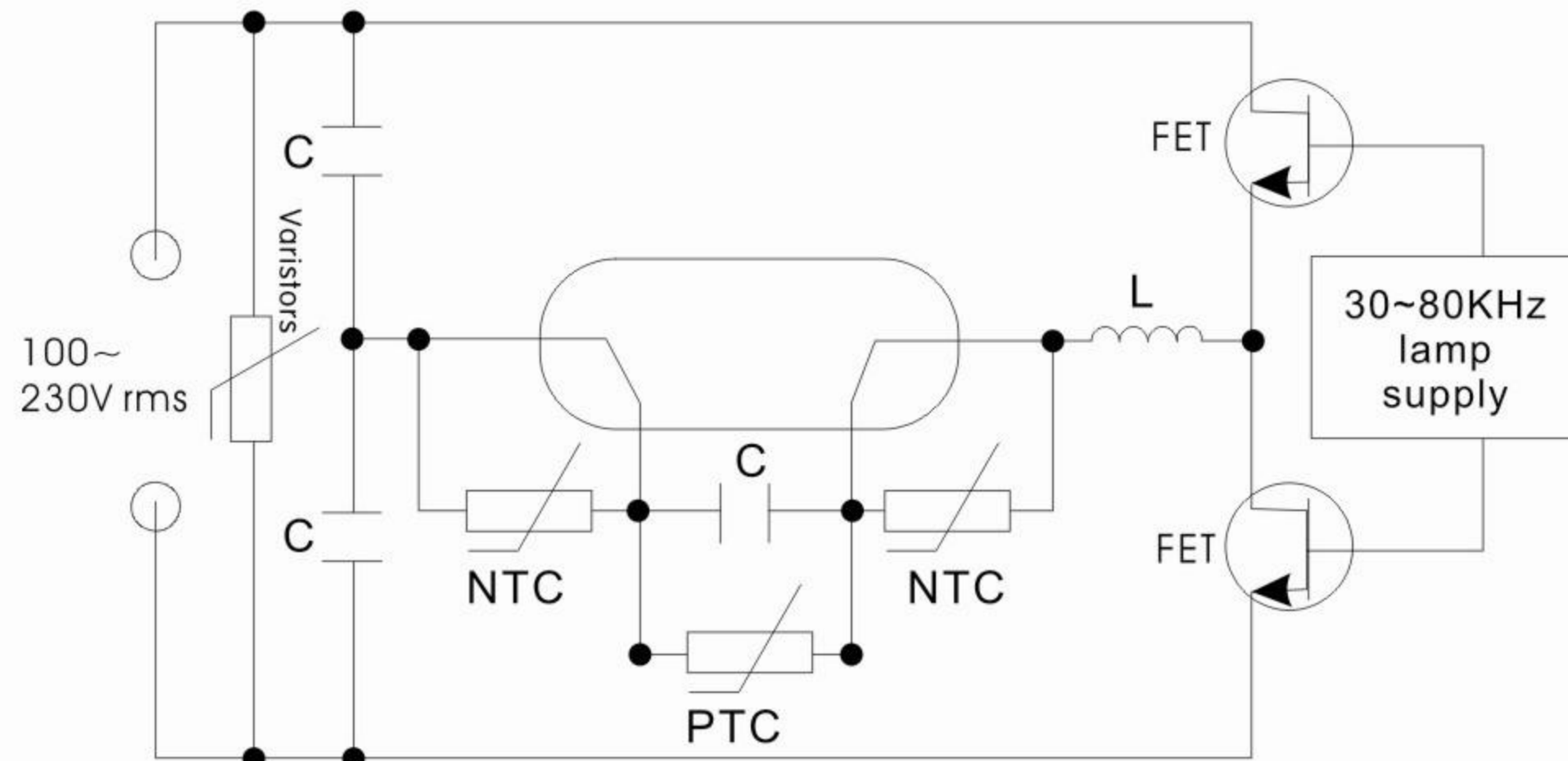


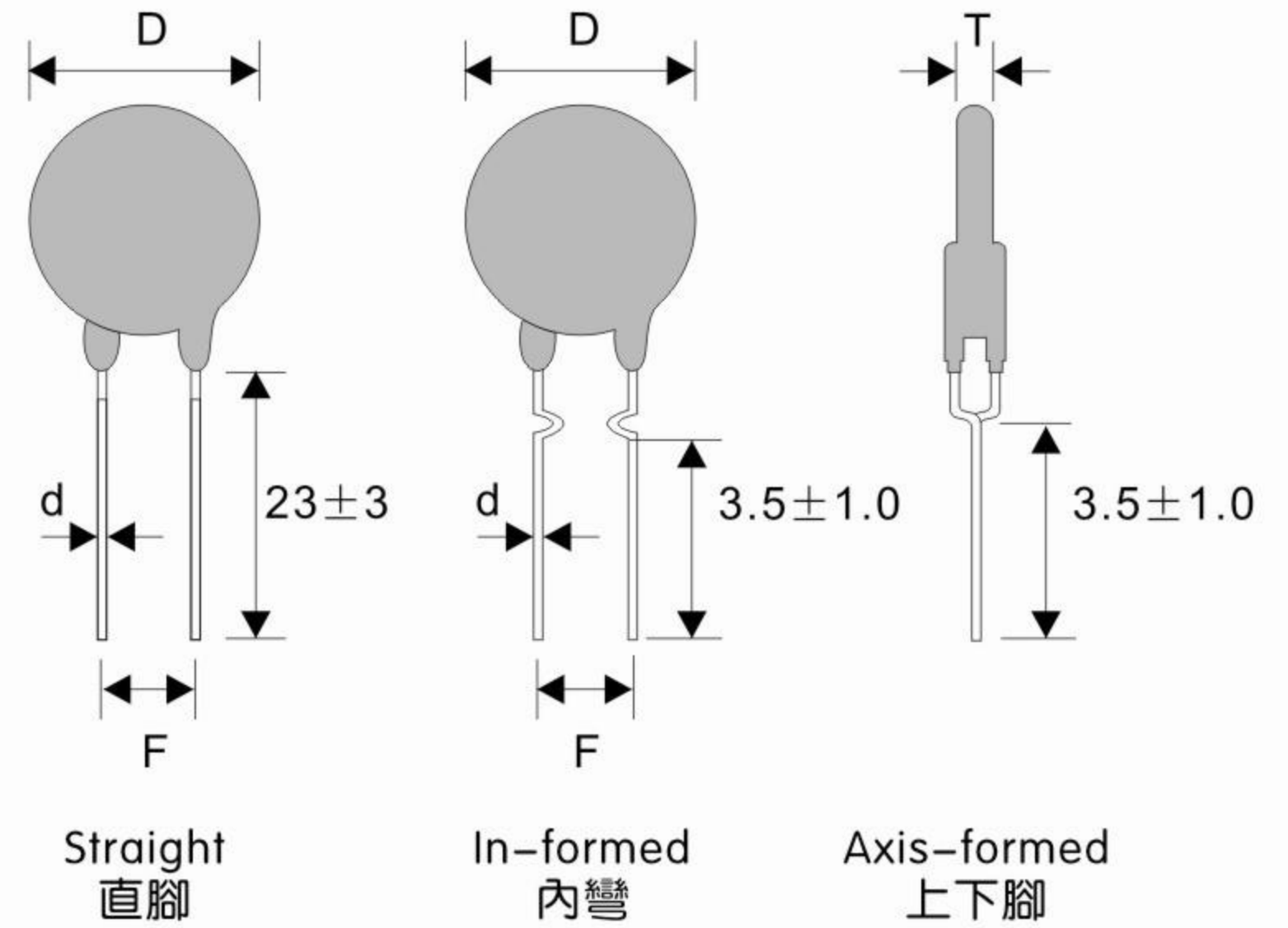
ZMZ12E(ZMZ11E) Series

PTC THERMISTORS 正溫度系數熱敏電阻器

用于電子鎮流器/節能燈預熱啟動 -For Preheating of the Electronics Ballast/CFL



Typical Application Circuit of Electronic Ballast/
CFL for PTC/NTC Thermistors & Varistors
PTC/NTC熱敏電阻和壓敏電阻用于電子鎮流器/
節能燈的典型線路



HOW TO ORDER

ZMZ12E 750 A 102 N S P B 5 N

系列Series
居裏溫度Curie Temp.
500=50°C, 750=75°C,
850=85°C, 105=105°C, 121=120°C.
Max. Diameter D_{max}: 外徑
(A=φ6.5, B=φ8.5, S=φ4.5, L=φ5.5)
額定零功率電阻R_N
Rated zero power resistance
102=1000Ω, 680=68Ω
Tolerance of Resistance 阻值誤差
(N=±30%, V=±25%, M=±20%,
K=±10%, X=Other Special Tol.
其它特殊誤差)

N: 符合ROHS要求
N: Compliance with ROHS directive
腳長Leads Diameter: 5=5mm, 0=10mm, L=23mm
Packing包裝:
B: Bulk散裝, A: Ammo編帶盒裝, R: Reel編帶卷裝
引線材質:
P: Cp鋼線, U: Cu銅線
Lead Type腳型:
I: In formed 內彎, S: Straight 直腳
A: Axis-formed 上下腳
N: No Leads 無腳

規格 Specifications

最大工作電壓Max. Operating Vol.: U_{max}=265VAC

No. 序號	Rated zero-power resistance 額定零功率電阻 R _N (Ω)	Breakdown Vol. 耐電壓 U _B (VAC)	Max. Permissible Repetitive Turn Over Current 最大可重複通斷電流 I _B (mA)	Over Current Withstanding 耐電流能力 I _B (mA)	Curie Temp. 居裏溫度 T _c (°C)	Dimensions外形尺寸 (mm)		
						D _{max}	T _{max}	d ^{±0.1}
01	68±30%	360	200	300	50±7	4.5	4.5	0.5
02	100±30%	400						
03	150±30%	400						
04	220±30%	500						
05	330±30%	500						
06	470±30%	600						
07	680±30%	600						
08	1000±30%	600						
09	1500±30%	600	140	210				
10	2200±30%	600	90	135				
11	3300±30%	600	60	90				
12	4700±30%	600	40	60				

規格 Specifications

最大工作電壓Max.Operating Vol.:Umax=265VAC

No. 序號	Rated zero-power resistance 額定零功率電阻 RN(Ω)	Breakdown Vol. 耐電壓 UB(VAC)	Max. Permissible Repetitive Turn Over Current 最大可重複通斷電流 IB(mA)	Over Current Withstanding 耐電流能力 IB(mA)	Curie Temp. 居裏溫度 Tc(°C)	Dimensions外形尺寸 (mm)								
						Dmax	Tmax	d ±0.1						
13	68 ± 30%	360	200	300	75 ± 7	4.5	4.5	0.5						
14	100 ± 30%	400												
15	150 ± 30%	400												
16	220 ± 30%	500												
17	330 ± 30%	500												
18	470 ± 30%	600												
19	680 ± 30%	600												
20	1000 ± 30%	600												
21	1500 ± 30%	600							140	210				
22	2200 ± 30%	600							90	135				
23	3300 ± 30%	600	60	90										
24	4700 ± 30%	600	40	60										
25	68 ± 30%	360	180	270	105 ± 7	4.5	4.5	0.5						
26	100 ± 30%	400												
27	150 ± 30%	400												
28	220 ± 30%	400												
29	330 ± 30%	500												
30	470 ± 30%	500												
31	680 ± 30%	600												
32	1000 ± 30%	600												
33	1500 ± 30%	600							140	210				
34	2200 ± 30%	600							90	135				
35	68 ± 30%	360	180	270	120 ± 7	4.5	4.5	0.5						
36	100 ± 30%	400												
37	150 ± 30%	400												
38	220 ± 30%	400												
39	330 ± 30%	500												
40	470 ± 30%	500												
41	680 ± 30%	600												
42	1000 ± 30%	600												
43	68 ± 30%	360							300	450	85 ± 7	5.5	4.5	0.6
44	100 ± 30%	400												
45	150 ± 30%	400												
46	220 ± 30%	400												
47	330 ± 30%	500												
48	470 ± 30%	500												
49	680 ± 30%	600	300	450										
50	1000 ± 30%	600	200	300										
51	1500 ± 30%	600	140	210										
52	2200 ± 30%	600	90	135										
53	68 ± 30%	360	300	450	105 ± 7	5.5	4.5	0.6						
54	100 ± 30%	400												
55	150 ± 30%	400												
56	220 ± 30%	500												
57	330 ± 30%	500												
58	470 ± 30%	600												
59	680 ± 30%	600												
60	100 ± 30%	400							300	450	120 ± 7	5.5	4.5	0.6
61	150 ± 30%	400												
62	220 ± 30%	400												
63	330 ± 30%	500												
64	470 ± 30%	500												
65	680 ± 30%	600												
66	68 ± 30%	420	400	600	50 ± 7	6.5	5.0	0.6						
67	100 ± 30%	420												
68	150 ± 30%	500												
69	220 ± 30%	500												
70	330 ± 30%	600												
71	470 ± 30%	600												
72	680 ± 30%	600							300	450				
73	1000 ± 30%	600							200	300				
74	1500 ± 30%	600							140	210				
75	2200 ± 30%	600							90	135				
76	3300 ± 30%	600	60	90										
77	68 ± 30%	600	400	600	50 ± 7	6.5	5.5	0.6						
78	100 ± 30%	600												
79	150 ± 30%	750												
80	220 ± 30%	750												
81	330 ± 30%	800												
82	470 ± 30%	900												
83	680 ± 30%	900							300	450				
84	1000 ± 30%	900							200	300				
85	1500 ± 30%	1000							140	210				

規格 Specifications

最大工作電壓Max. Operating Vol.: $U_{max}=265VAC$

No. 序號	Rated zero-power resistance 額定零功率電阻 $R_N(\Omega)$	Breakdown Vol. 耐電壓 $U_B(VAC)$	Max. Permissible Repetitive Turn Over Current 最大可重復通斷電流 $I_B(mA)$	Over Current Withstanding 耐電流能力 $I_B(mA)$	Curie Temp. 居裏溫度 $T_c(^{\circ}C)$	Dimensions外形尺寸 (mm)								
						Dmax	Tmax	d ± 0.1						
86	68±30%	420	400	600	75±7	6.5	5.0	0.6						
87	100±30%	420												
88	150±30%	500												
89	220±30%	500												
90	330±30%	600												
91	470±30%	600												
92	680±30%	700												
93	1000±30%	700												
94	1500±30%	800												
95	2200±30%	800												
96	3300±30%	800												
97	68±30%	600	400	600	75±7	6.5	5.5	0.6						
98	100±30%	600												
99	150±30%	750												
100	220±30%	750												
101	330±30%	800												
102	470±30%	900												
103	680±30%	900												
104	1000±30%	900												
105	1500±30%	1000												
106	2200±30%	1000												
107	3300±30%	1000												
108	68±30%	400	400	600	105±7	6.5	5.0	0.6						
109	100±30%	400												
110	150±30%	400												
111	220±30%	500												
112	330±30%	600												
113	470±30%	600												
114	680±30%	700												
115	1000±30%	700												
116	68±30%	400							400	600	120±7	6.5	5.0	0.6
117	100±30%	400												
118	150±30%	400												
119	220±30%	500												
120	330±30%	500												
121	470±30%	600												
122	68±30%	400	800	1200	50±7	8.5	5.0	0.6						
123	100±30%	500												
124	150±30%	500												
125	220±30%	600												
126	330±30%	600												
127	470±30%	600												
128	680±30%	600												
129	1000±30%	600												
130	68±30%	400							800	1200	75±7	8.5	5.0	0.6
131	100±30%	500												
132	150±30%	500												
133	220±30%	600												
134	330±30%	600												
135	470±30%	600												
136	68±30%	400	800	1200	85±7	8.5	5.0	0.6						
137	100±30%	500												
138	150±30%	500												
139	220±30%	600												
140	330±30%	600												
141	470±30%	600												
142	560±30%	800												
143	68±30%	400							800	1200	105±7	8.5	5.0	0.6
144	100±30%	500												
145	150±30%	500												
146	220±30%	600												
147	330±30%	700												
148	470±30%	800												
149	68±30%	600												
150	100±30%	600	800	1200	75±7	8.5	5.5	0.6						
151	150±30%	750												
152	220±30%	900												
153	330±30%	1000												
154	470±30%	1000												
155	680±30%	1000												
156	1000±30%	1000												
157	1500±30%	1000												
158	2200±30%	1000												