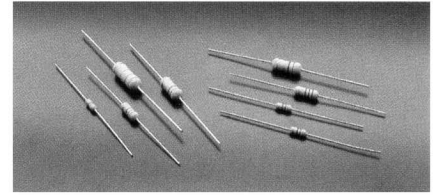
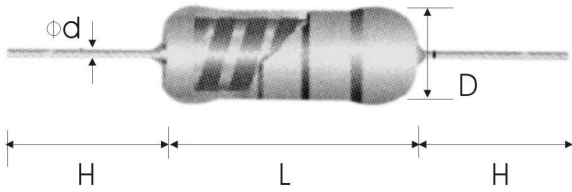
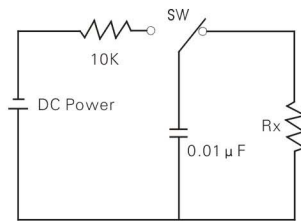


Metal Glaze (G) Series 玻璃釉電阻器

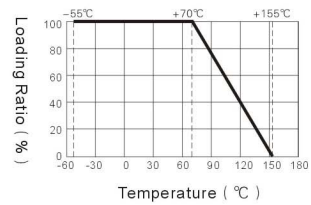


It Can Stand Pulse Voltage



On off each time 2.5s repeat 10 times

Power Curve



Characteristics

Power (70°C)	1/4W	1/2W	1W	2W	
Dimension(mm)	D Max.	2.7	3.8	5.2	6
	L Max.	7	10	13	17
	d ^{+0.02} _{-0.05}	0.6	0.6	0.7	0.8
	H ± 3	28	28	28	28
Working Voltage	500V	700V	1000V	1000V	
Test Voltage	700V	1000V	1400V	1400V	
Insulation Voltage	500V	700V	1000V	1000V	
Pulse Voltage	100K-1M:3000V 1M1-6M2:4000V ≧6M8:6000V	100K-1M:4000V 1M1-6M2:5000V ≧6M8:8000V	100K-1M:5000V 1M1-6M2:6000V ≧6M8:9000V	100K-1M:8000V 1M1-6M2:9000V ≧6M8:10000V	
Resistance Range	± 1% :100KΩ-1MΩ ± 5% :1KΩ-33MΩ	± 1% :100KΩ-1MΩ ± 5% :1KΩ-33MΩ	± 1% :100KΩ-1MΩ ± 5% :1KΩ-33MΩ	± 1% :100KΩ-1MΩ ± 5% :1KΩ-33MΩ	

230

Characteristics

Temperature Coefficient	≧ ± 200PPM/°C
Loading of Instantaneous Insulation Voltage	ΔR/R ≧ ± (1%+0.05Ω), No Failure
Pulse Loading	ΔR/R ≧ ± (2%+0.05Ω), No Failure
Strength of Lead	Pull and Bending > 1Kg,A 90° Bend at the Point of Egress,in One Direction, Return to Original Position and then A 90° Bend in Opposite Direction at the Rate of One Bend in 5 Seconds.
Resistance to Solder Heat	ΔR/R ≧ ± (1%+0.05Ω), No Failure
Solder Ability of Leads	>95%
Resistance to Solvent	No Failure
Temperature Cycle	ΔR/R ≧ ± (1%+0.05Ω),No Failure
Humidity Loading	ΔR/R ≧ ± (5%+0.05Ω),No Failure
Loading Life High Temp. Loading	ΔR/R ≧ ± (5%+0.05Ω),No Failure