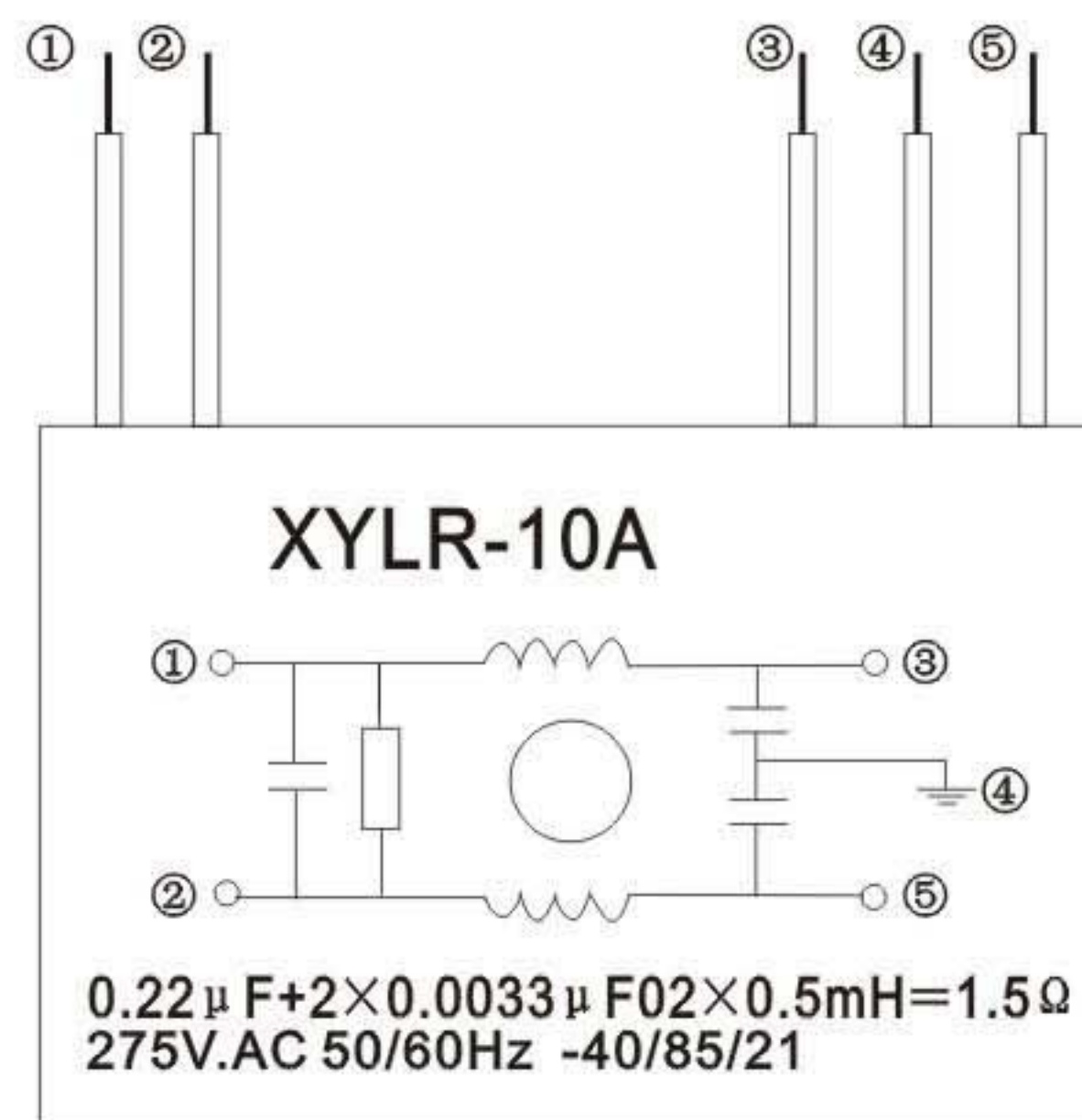
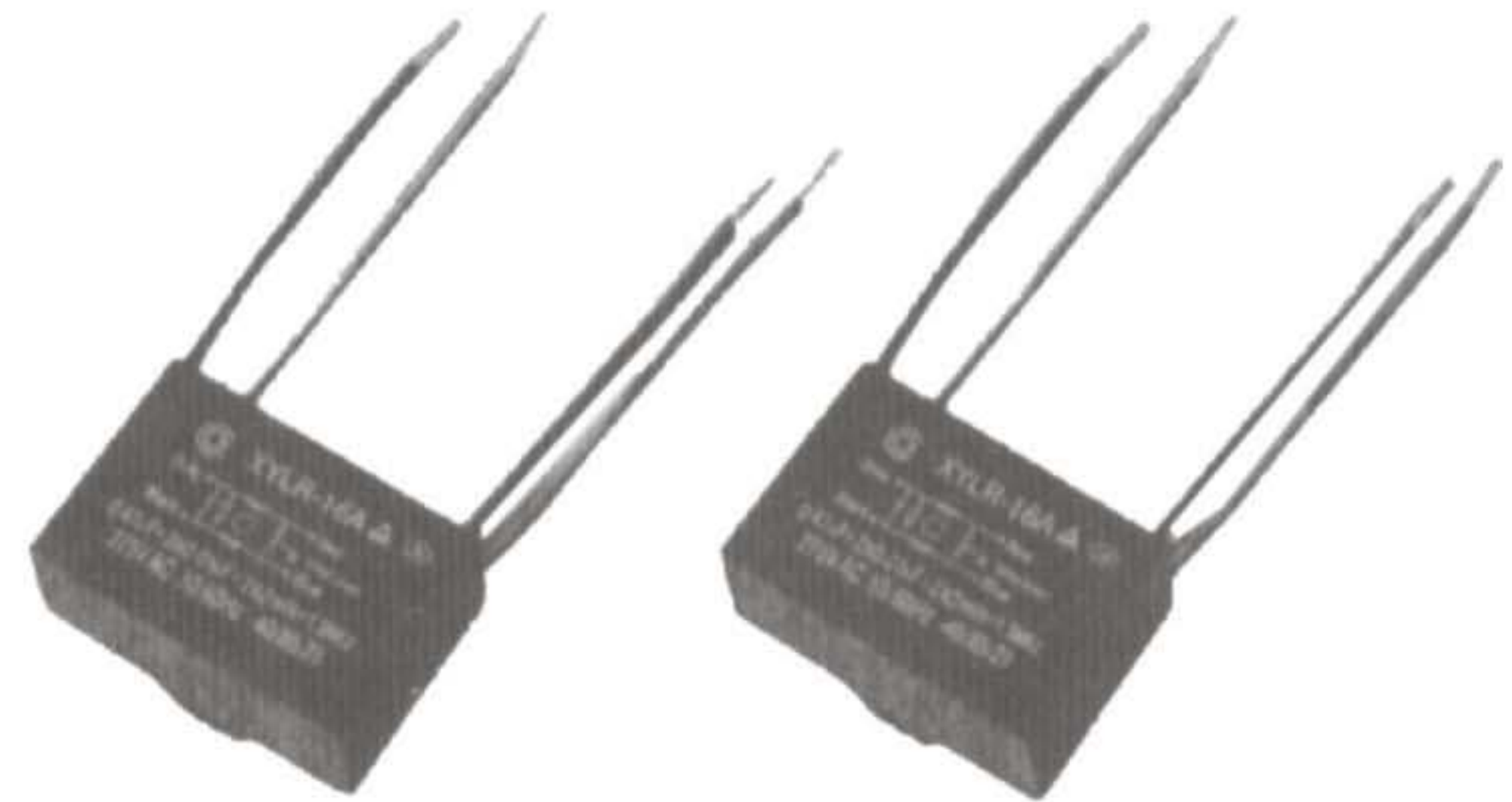
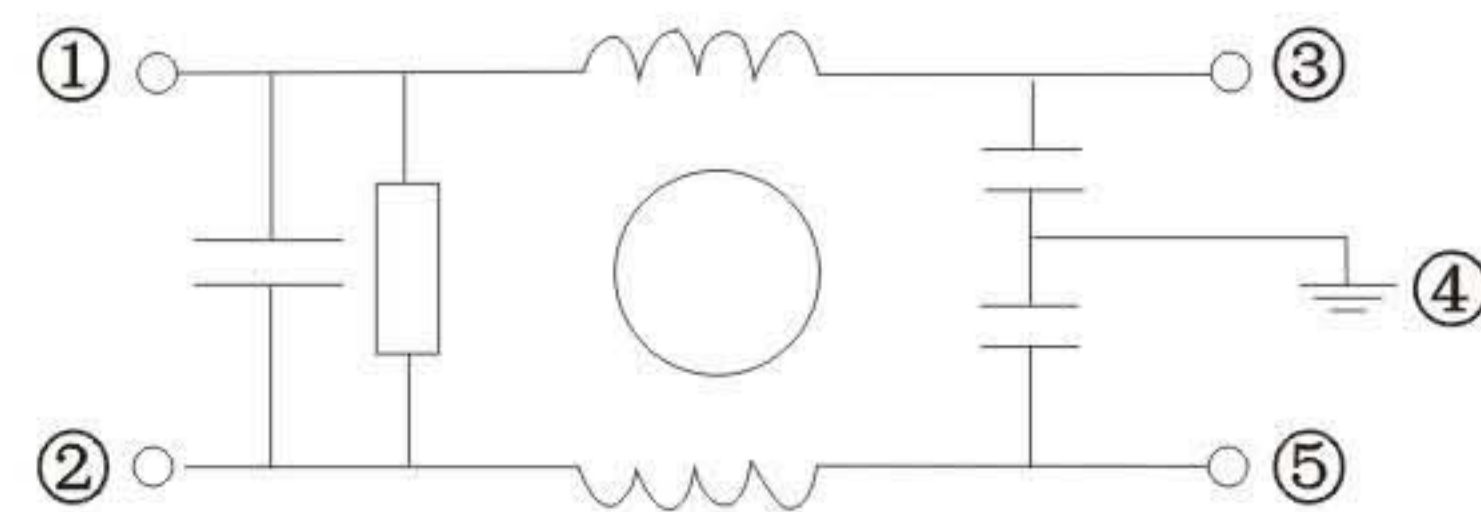


XYLP 系列用于常规电路滤波器 Filter For Common Circuit XYLR

外型圖 OUTLINE DRAWING



等效電路圖 EQUIVALENT CIRCUIT



71

特點 FEATURE

- 很好的消除共模干擾和差模干擾 Excellent clear up common mode(CM) and different mode (DM)
- 在規定的時間內放電到安全電壓 Discharge at the safe voltage in regulate time
- 軟採用環氧樹脂灌封，可適應各種惡劣的環境 Pour epoxy resin can use in occasion
- 低成本 Lower cost
- 軟綫引出簡易的安裝方式 Plastic leading wire for easy using
- 很小的泄露電流 Low current to earth

用途 APPLICATION

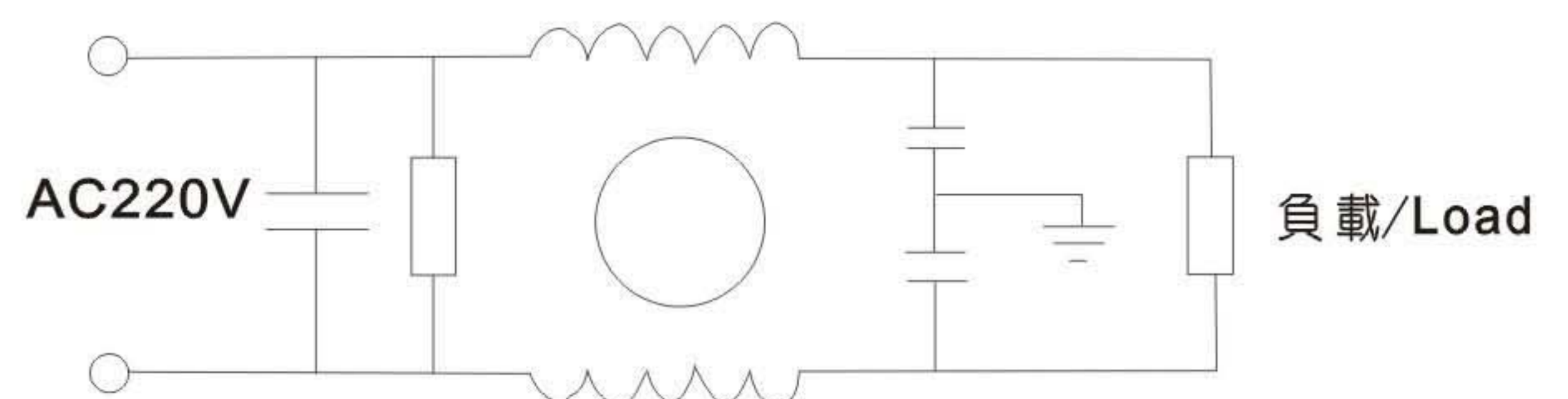
對差模干擾和共模干擾有很好的抑制作用，主要應用於各種常規電路濾波。

XYLR series filter for Common circuit can excellent clear up common mode (CM) and differential mode (DM).

功能 FUNCTION

對於兩個Y2電容器芯子，通過傳導的方式消除共模干擾，跨線的X2芯子和扼流圈通過吸收的方式消除差模干擾。採用共模電感在高頻時的高阻抗，抑制干擾信號。 Y2 Linking to earth for reject common mode (CM) by conduct and X2 & Choke L acrossing Line for reject differential mode (DM) the common mode induction for rejecting the mterference signal by high-resistant in high frequency.

典型應用電路 TYPICAL APPLICATION CIRCUIT



規格說明 SPECIFICATION

項目/Item		性能/Performance	
封裝形式/Coating		採用阻燃塑料外殼,環氧樹脂封裝 Encapsulated in a plastic sealed with epoxy resin	
阻燃等級/Grade of burning prelentadility		UL94V-0	
引出方式/Fetching out ways		軟綫引出/Plastic leading wire	
引用標準/Reference standard		EN133200;1999;GB/15287-94;GB/T15288-94;GB 7343-87	
外殼絕緣電阻/Insulation Resistance between case and pole		$R_s > 15000M\Omega$ (at 500V.DC)	
電壓額定/Climatic Voltage		275V.AC	
氣候類別/Climatic Category		-40/85/21	
容量偏差(%)/Cap.tol(%)	X2類電容/X2	$\pm 10\%$ (K)	
	Y2類電容/Y2	$\pm 20\%$ (M)	
額定電壓/Rated Voltage		275V.AC 50/60Hz	
耐電壓/Withstand voltage	Between①and②	4.3Un DC 10S	
	Between③and④, Between④and⑤	2700V DC10S	
損耗角/Dissipation factor	Between①and②	$T_g \delta \leq 0.0020$	$C \leq 0.33 \mu F f = 10kHz$
	Between③and④, Between④and⑤		$C > 0.33 \mu F f = 1kHz$
放電電阻/Shunt resistance	Between①and②	$\Delta R/R: \pm 10\%$ (K) $\pm 20\%$ (M) (at 20°C 100V.DC)	
絕緣電阻/Insulation resistance	Between③and④, Between④and⑤	$\geq 15000M\Omega$ (at 20°C 100V.DC)	
耐衝擊次數/Withstand current		500萬次以上/at least five million times	

尺寸 DIMENSION

編號 Index	長 L(mm)	寬 W(mm)	高 H(mm)	引綫 LEADS	電容 X2	電容 Y2	電感值 L	電阻值 R
1	38	23	32	UL22#	0.1 μ F	0.0022 μ F	1 μ H~100 μ H	10 Ω ~10M Ω
2	48	19	29	UL22#	0.22 μ F	0.0033 μ F	1 μ H~100 μ H	10 Ω ~10M Ω
3	58	28	40	UL16#	0.47 μ F	0.0047 μ F	1 μ H~100 μ H	10 Ω ~10M Ω
4	70	38	52	UL14#	1.0 μ F	0.0047 μ F	1 μ H~100 μ H	10 Ω ~10M Ω

具體尺寸和技術參數，可按客戶要求協商確定。Special requirements can be designed at the request of customers